



Nano Extensions, Hair Extension Quality & Trade Discount

WHAT ARE NANO EXTENSIONS?

Nano Extensions can also be known as Nanolink, Nano ring & nano tip.

Nanolink is a gathering of hair, held together with a keratin bond around the hair secured with a metal tip in the centre.

Nano link are a fairly new innovation of professional hair extensions and are considered one of the safest methods and techniques currently on the market. Nano Extensions were inspired by the microlink extension.. Nanolink Extensions were originally designed for ladies with thin fine hair, as the Nano bead extension is 90% smaller than microbead extension making it more discrete, comfortable and safe for people with think fine hair.

The nano bead is small and light weight with proper installation this does not cause any extra stress to the natural hair. This being said keep in mind that any type of hair extensions including nanolink must be installed and removed by an expert technician with appropriate qualifications. Nanos may be a safer method, but do require proper care and handling. We must inform clients of this as well and strongly recommend against them removing the extensions themselves. Inform clients that improper removal can easily lead to damage and more hair loss, as they can easily slice their natural hair with the edge of the pliers. Clients are to worry about the daily hair care routine, and leave your nano maintenance and removals to you, the professionals.

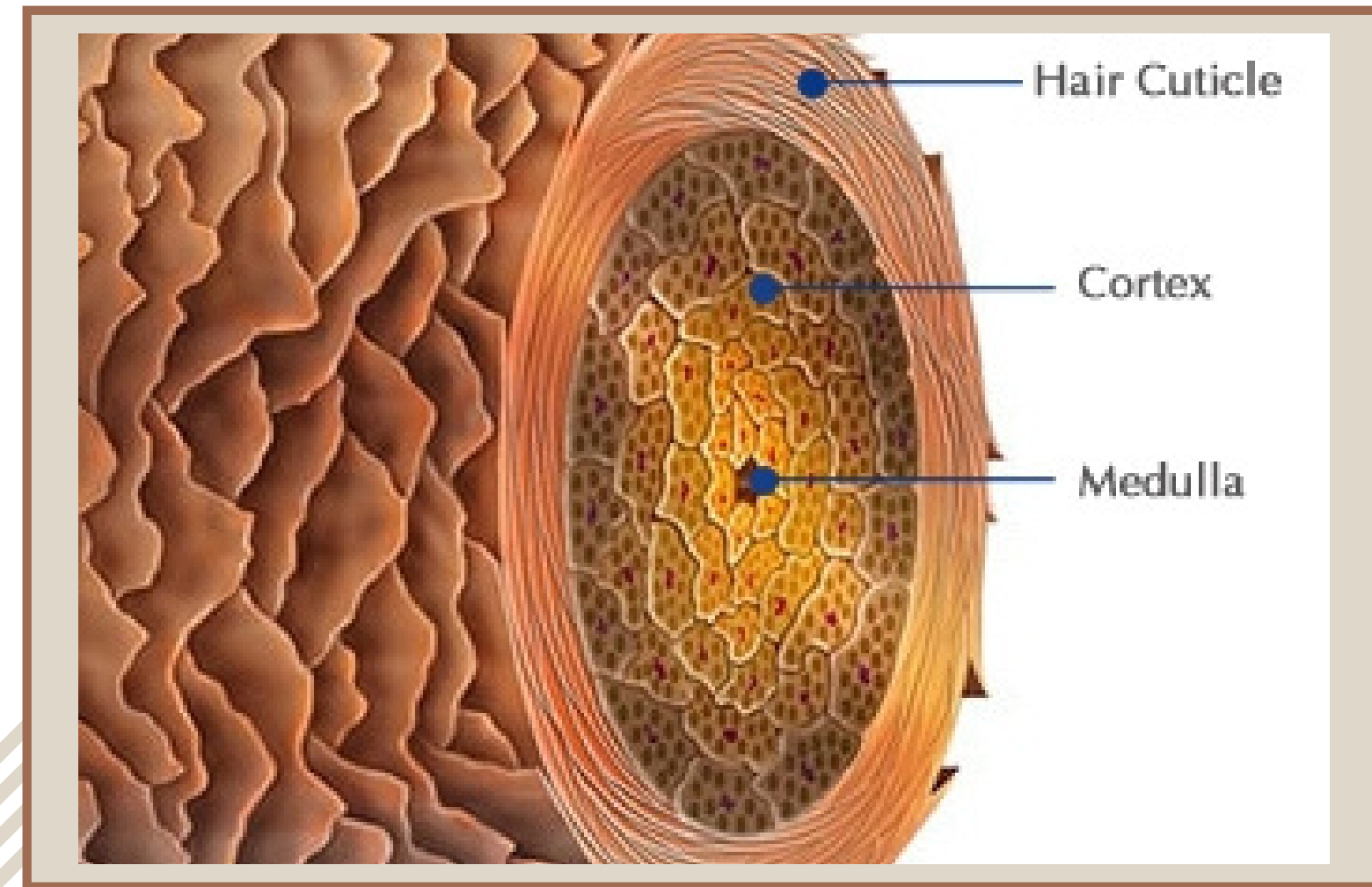
HUMAN HAIR

Let's take a look at a strand of human hair, this will help understand why there are so many different types of human hair extensions available on the market today.

Cuticle - this is your hair's protective layer, composed of overlapping cells – like fish scales or roof tiles, but facing downwards.

Cortex - the middle layer of the hair shaft which provides the strength, colour and texture of a hair fibre.

Medulla - the innermost layer of the hair structure consisting of sparse cells and air bubbles. Mostly seen only in thick hair.



DAMAGED AND NORMAL HAIR



LOW POROSITY
tightly closed



MEDIUM POROSITY
slightly opened, not closed



HIGH POROSITY
wide opened cuticles

REMY VS NON REMY HAIR

Remy hair - refers to the cuticle of hair running in one direction. Remy hair is collected from one donor. Cuticles are all aligned and intact running the same direction.

Non Remy Hair - also can be called New Remy hair is human hair that is collected from multiple sources, and cuticles will be running different directions.. Non-remy hair can be sold multiple different ways. A lot of times manufacturers will coat the hair with a silicone to make it feel healthy again, then when it is washed a few times you will notice over time you will see more matting and tangling. This hair should only be used for temporary use extensions.

Alot of hair online like Amazon, Ebay and ali express carry non remy



VIRGIAN HAIR

Virgin hair refers to hair that is undamaged, unprocessed and completely intact. Not all healthy hair can be classed as virgin hair however.

Virgin hair

- Virgin hair is hair that has not been processed and the cuticle intact, and running aligned.
- Virgin hair coming from a single donor, one person.
- Virgin hair is usually single drawn

The hair is tied back and cut above the ponytail, this keeps the cuticles in one direction, this process is called Remy Hair. This process prevents tangling and shedding. The virgin hair will then go through the process of being washed, disinfected and prepared into hair extensions.



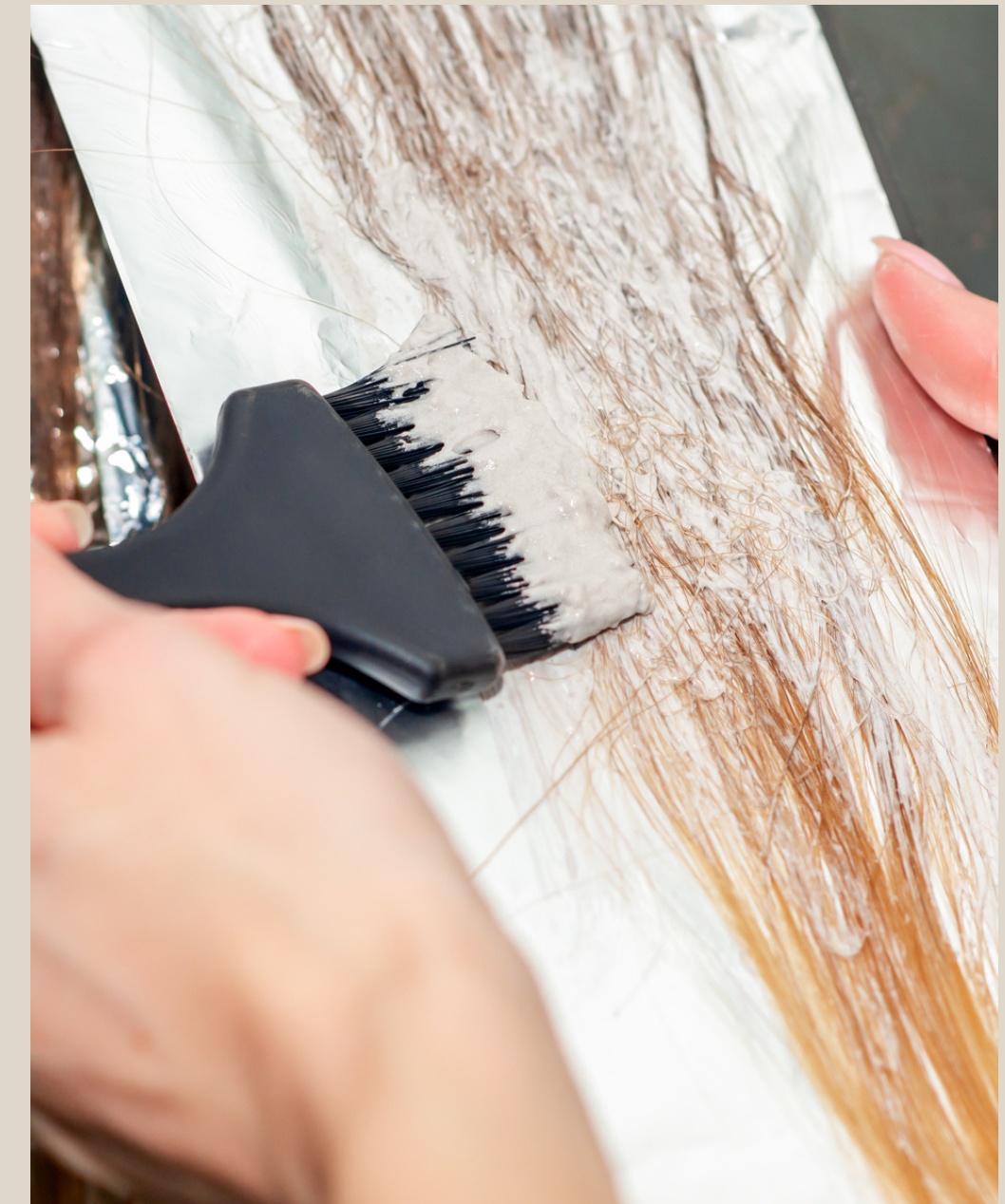
PROCESSED HAIR

Processed hair has been chemically treated during production to make it appear a certain way. Processed hair is soaked in a highly acidic bath to strip it of its cuticles and basically remove all of the natural characteristics of the strands. Processed hair has advantages and disadvantages.

Processed Hair

- Processed hair can come in a large variety of textures and colours.
- Processed hair goes under chemical treatments, like bleaching to achieve the blonde.
- Processed hair lifespan will be shorter than virgin hair due to the bleaching and processes it undergoes

- This hair is collected in the same way as Virgin hair. Some manufactures will do the process differently which also will allow for different results long term. If you start with Indian hair It undergoes flash bleaching, taking black hair to bleach blonde hair in one day, and can cause more damage to the cuticle. If you start with Russian or European hair it is considerably less damaging as it's starting with a dark hair colour and can take 1 to 2 weeks to get it to blonde. This being done over a period of time is way less damaging to the hair.



OVERVIEW OF HAIR



Virgin hair lifespan can be up to two years, its the best quality on the market, but only available in black to very dark brown

Processed Remy lifespan can be up to a year, this would be your next step down from Virgin hair. It is available in a wide variety of colours, but has undergone a chemical process so depending on the level of the final colour would be the remaining percent of cuticle .

Non remy hair lifespan is 2 to 3 months. The quality of this hair is low. This is what is found a lot of time when ordering hair online from websites. This hair a lot of time come in different textures, wavy and curly.

New Remy hair life span you are looking at one month or less. This is hair that is used for cheap wigs, but can also be found online a lot of times too. More like synthetic hair.

BENEFITS OF CAKE HAIR

Pro's and cons Nano / Cake Hair Extensions

Pro's -

- Great for thin fine hair
- Russian Hair
- Extremely discrete, Nano beads are 80% percent smaller than micros beads
- Reusable and long lasting
- Least damaging extension on the market no chemicals, no heat, and no heavy bulk and weight
- Can wear your hair up with these extensions
- Easy to freshen up and change looks, as you can add a bundles any maintenance appointment.
- You can spread cost out over maintenance appointments next time you need hair. You don't have that upfront initial cost of the extensions

Con's -

- Time consuming application
- Less secure, due to the small bead application of the nano extension you have more slippage than other extensions.
- Cost can be more expensive for thick hair clients as they will need more bundles to fill their hair and to blend.



PROFESSIONAL DISCOUNT

At Cake Hair Extensions, we want to give you our customers who have a trade/certification in the beauty industry the best possible value & deal.

We appreciate your continued support with incentives that help reduce your costs, increase your margins and ensure you are receiving the best customer support and products to succussed in your business.

Please email me your certification
to
cakehairextensions@gmail.com

* We will review. and get back to your within 48 hours with your discount code.
this can be applied at your check out *

